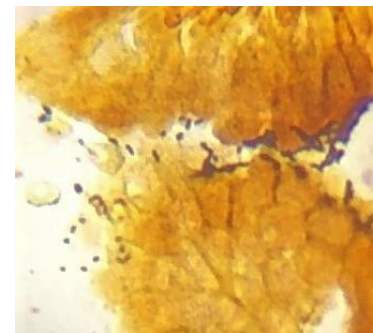


Spirochete Control Slides

Tissue:

- (+) Human tissue with spirochete infection
- (-) Human tissue

Note: Tissue type may vary due to availability.



Steiner & Steiner Stain

Fixative: 10% Neutral buffered formalin

Embedding: Paraffin

Thickness: 4 μ m

Mounting: Mounted on positively charged slides made of pure white glass; air dried

STORAGE: 2-8°C.

INTENDED USE: Deparaffinize and rehydrate before use.

Positive tissue controls should only be utilized for monitoring the correct performance of processed tissues and test reagents, rather than as an aid in the interpretation of samples. If the positive tissue controls fail to demonstrate positive staining, results with the test specimens should be considered invalid.

spirochetes	Black
background	Yellow brown